



# AltRider Skid Plate for KTM 1190 Adventure R

## INSTALLATION INSTRUCTIONS

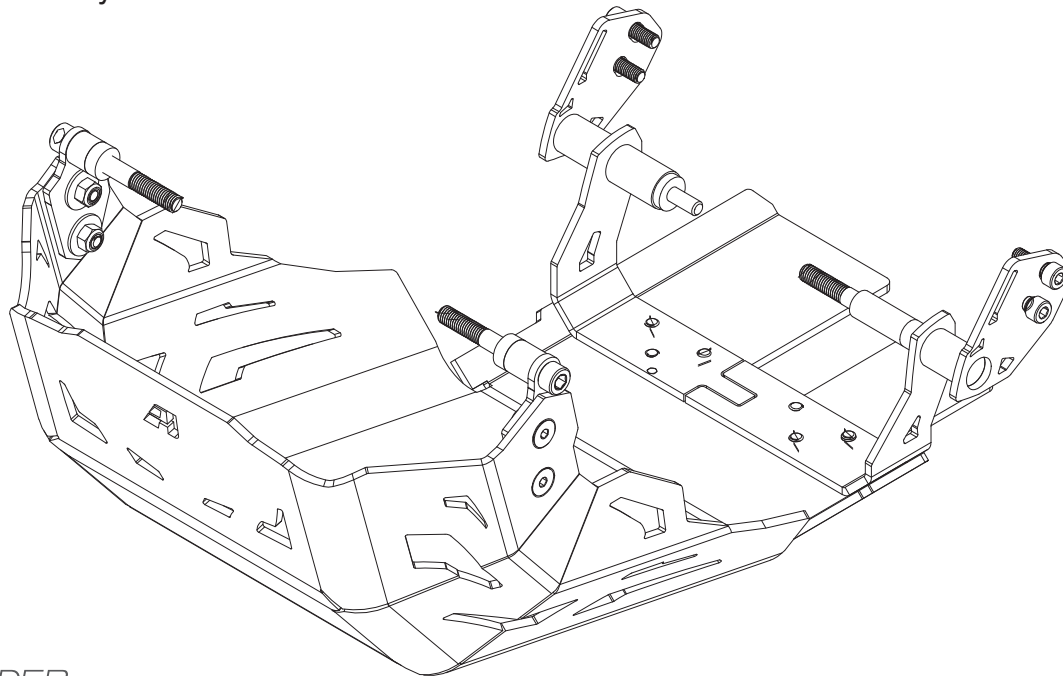
The most up to date instructions can be downloaded from the product page at [altrider.com](http://altrider.com), under the instructions tab.

Dear Rider,

Thank you for choosing AltRider! Whether a seasoned world adventurer or a first time ADV-Newbie, we welcome you to the AltRider experience. You can install your new product with the utmost confidence. AltRider designs, tests, and manufactures all of its products here in the United States. We are proud to do what we do, and honored to present to you the product of our labors.

Enjoy it, show it off, and most of all, RIDE IT!

Venture On,  
Jeremy LeBreton



**AltRider Skid Plate for  
KTM 1190 Adventure R**

Package Contents:  
- Skid plate  
- Hardware kit

### AltRider LLC

**Global**

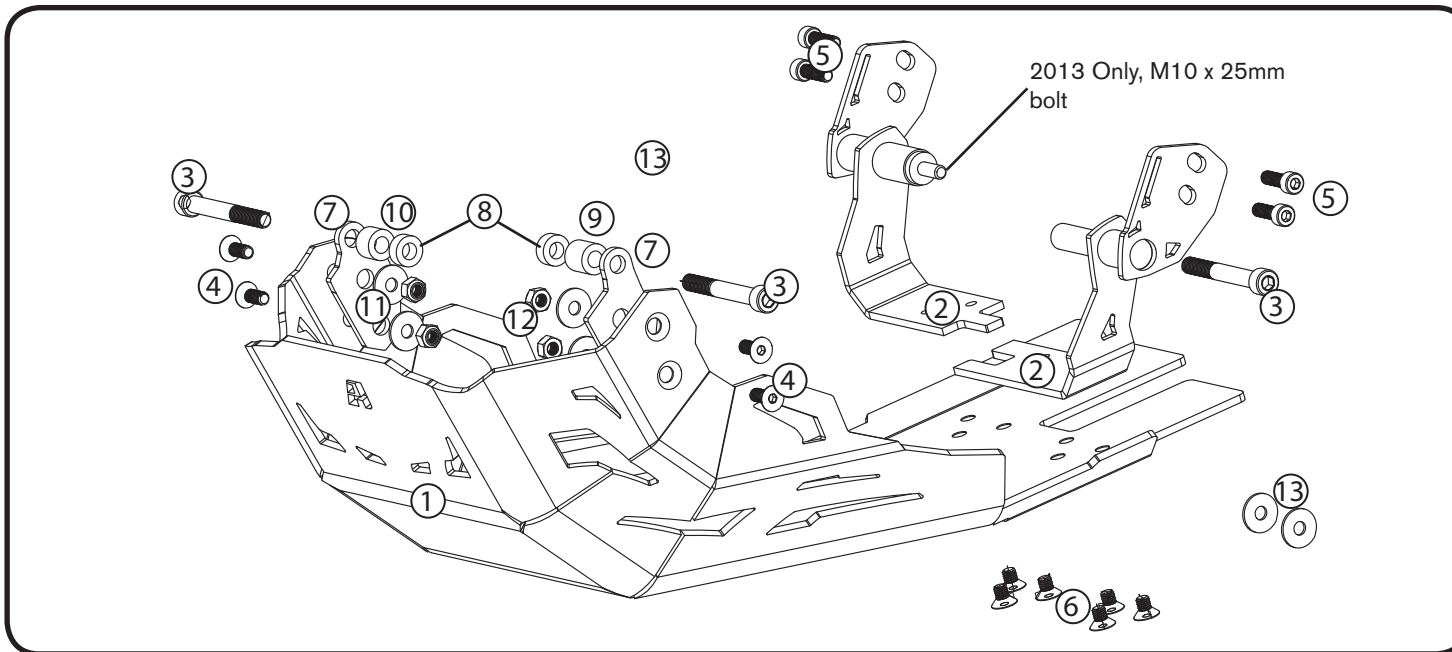
*mailing:* 4000 Aurora Ave N Ste 100  
Seattle, WA 98103 USA  
*phone:* 206-922-3618  
*email:* [info@altrider.com](mailto:info@altrider.com)  
*web:* [www.altrider.com](http://www.altrider.com)

**Europe**

*mailing:* Oude Middenweg 231-M  
2491 AG DEN HAAG  
Netherlands  
*email:* [info@altrider.eu](mailto:info@altrider.eu)  
*web:* [www.altrider.eu](http://www.altrider.eu)

**Rev 2.2  
MADE IN THE USA**





## Kit:

- ① Skid plate
- ② Left and Right brackets
- ③ (3) M10 x 80 mm stainless bolt
- ④ (4) M8 x 20 flat head bolt
- ⑤ (4) M8 x 25 socket head bolt
- ⑥ (3) M8 x 12 & (3) M8 x 10 FH bolt
- ⑦ Left and right front brackets
- ⑧ (2) 8mm spacers
- ⑨ 19mm spacer (for left side)
- ⑩ 14mm spacer (for right side)
- ⑪ (4) M8 washers
- ⑫ (4) M8 nylock nuts
- ⑬ (2) M10 washer (for certain models)
- (2) replacement cotter pins

## Recommended tools:

- ① Hardware tray
- ② 1/4" ratchet
- ③ 1/4" extension
- ④ 1/2" driver
- ⑤ 1/2" extension
- ⑥ M5 allen
- ⑦ M6 allen
- ⑧ M8 allen
- ⑨ 13mm wrench
- ⑩ T30 driver
- ⑪ T45 driver
- ⑫ Needle nose pliers
- ⑬ Thread locker



## RIGHT REAR MOUNT AREA, INBOARD OF FOOT PEGS.

**Note**

Does your model have  
this orange tab?

If not follow instructions below.

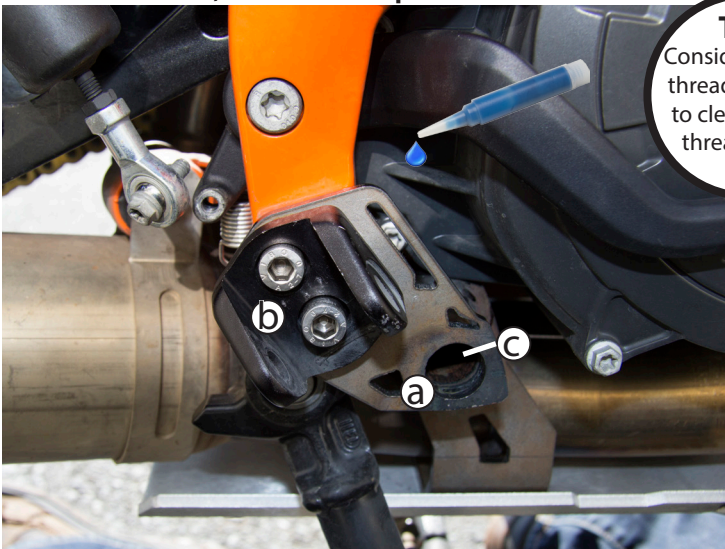
- ① On some models this metal tab is missing. If your model does NOT have this orange tab, use the two M10 stainless steel washers to make up the space.
- ② For some model years, the hole in the case is not threaded. This is a redundant mount point for the AltRider skid plate and can be left empty. Optionally, you may tap M10x1.5 threads into the hole and use the supplied M10 x 25 screw to mount at this location.





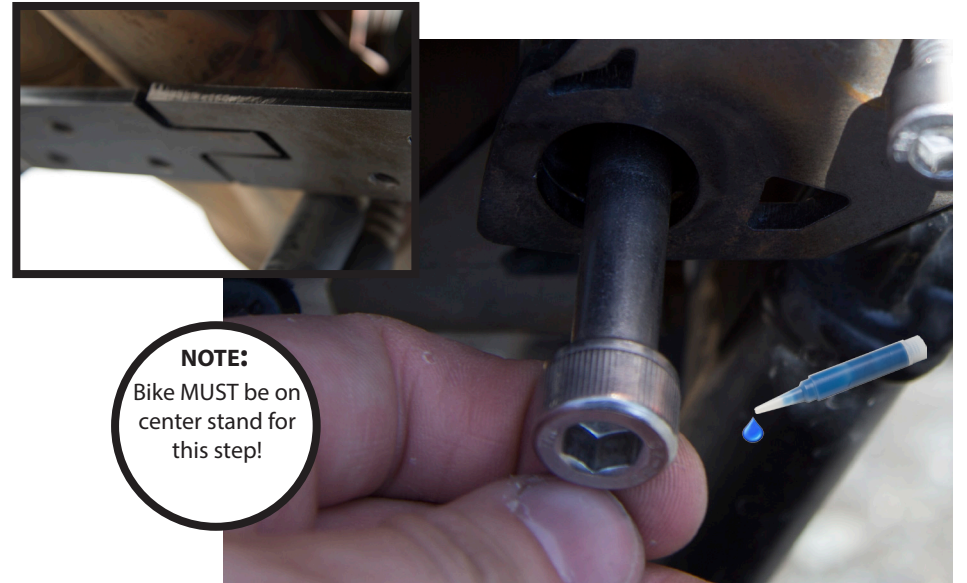
- ① Place bike on center stand and remove both rider foot pegs (a) and foot peg mounts. To remove the right side peg, you will need to loosen the rear brake arm using a T30 driver. You will reuse all parts except for the bolts holding the peg mounts in place to the frame. Remove OEM plastic cover (b) attached to the front of the engine. **TIP: If you have crash bars installed, loosen them up to make install easier.**

- ② Remove the front M10 bolts holding the crash bars on each side.



**TIP:**  
Consider chasing threads with tap to clean out old thread locker.

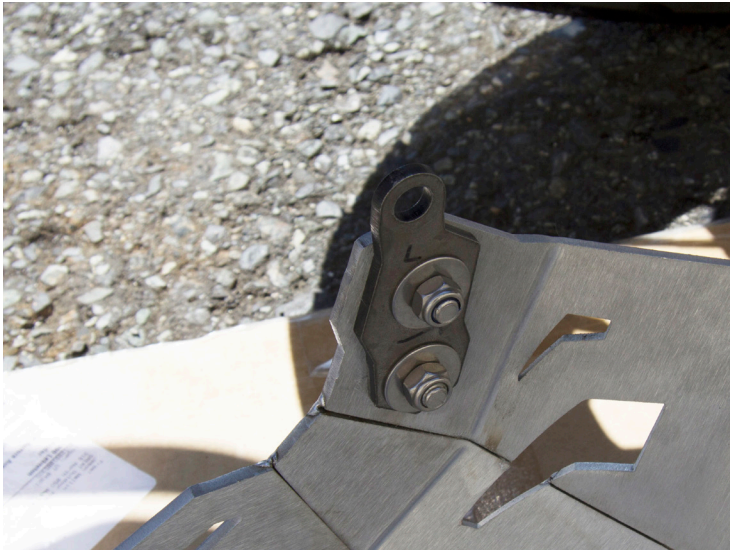
- ③ **2013 Model:** Remove the M10 engine bolt (c), mount bracket, and replace with the provided M10 x 25 bolt, use thread locker. **All Years:** On the riders right side, insert the right half of the rear mounting bracket (a) into the engine and start the (2) M8 bolts and peg mount (b) using an M6 allen driver. Go snug but do not torque down. Use thread locker.



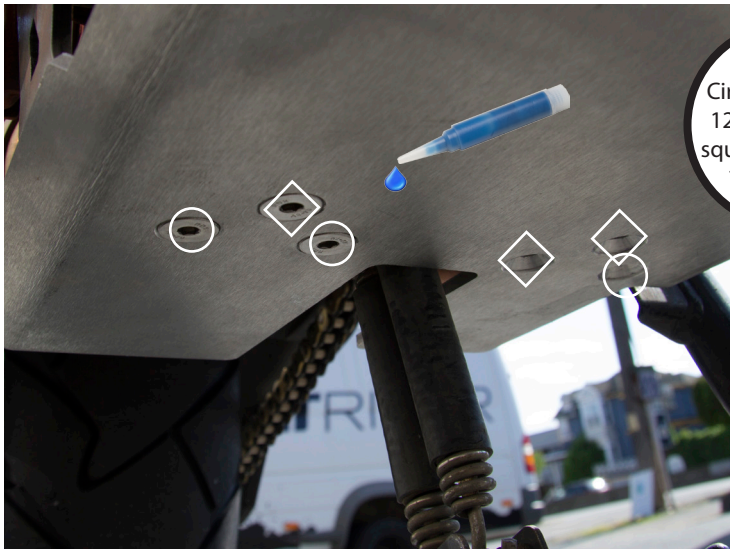
**NOTE:**  
Bike MUST be on center stand for this step!

- ④ On the left side, use the T45 driver to remove large side stand bracket bolt (M10). Mount bracket, install M8 bolts, and AltRider provided M10 x 80 bolt. Do not torque anything down yet but allow them to be snug. Use thread locker. (!) Make sure that both sides of the bracket intersect properly.



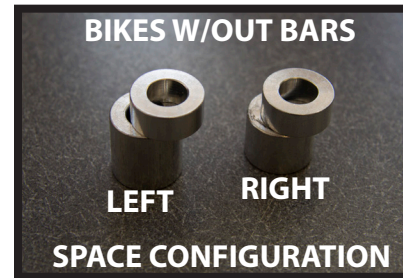


- ⑤ Add front brackets to the skid plate. Use the indicating marks on the brackets to place the left side bracket on the left side, facing the correct direction, triangle pointing forward. Repeat with the right side bracket. Install (4) M8 x 20 flat head bolts, washers, and nuts using a 13mm wrench and M5 allen. Snug the bolts but do not torque yet.



**BOLTS:**  
Circles represent  
12mm long and  
squares represent  
10 mm long.

- ⑦ Pivot the rear of the skid plate into alignment with the rear brackets. You may need to loosen bracket bolts to allow enough play to get the correct alignment. Start the (6) M8 flat head bolts using an M5 allen driver. Once all installed, torque them to 10 nm. Use thread locker.



- ⑥ Hang the front of the skid plate using the (2) AltRider provided M10 x 80 mm socket head cap bolts.

**BIKES WITH CRASH BARS:** Use the 19mm spacer on the left side and the 14mm spacer on the right side.

**BIKES WITHOUT CRASH BARS:** Use the same configuration with the addition of (1) 8mm spacers stacked on each side. Use thread locker and snug the bolts, do not torque.



- ⑧ Torque all bolts. Front (2) M10's to 30 nm. Front (3) M8's to 10 nm. Rear foot peg bracket (4) M8's to 15 nm. Rear M10 engine bolts (either both sides or only left side depending on bike year) to 30 nm.
- ⑨ Re-install the rider foot pegs and re-attach the rear brake cylinder arm using a T30.

## CONGRATULATIONS!

**You've completed your installation. If at any point you have questions about your installation or have any feed back for us, we'd love to hear it. A downloadable version of these instructions can be found at our web site. [www.AltRider.com](http://www.AltRider.com)**

**After 5 hours of riding, or 100 miles, check all the fasteners on the assembly to ensure they are tightened to spec.**

### Global Office:

**email: info@AltRider.com**  
**phone: +1 206-922-3618**  
**address: 4000 Aurora Ave N**  
**Ste 100**  
**Seattle, WA 98103**

### Europe Office:

**email: info@AltRider.eu**  
**address: Oude Middenweg 231-M**  
**2491 AG DEN HAAG**  
**Netherlands**

#### TERMS OF USE, WARRANTY AND LIABILITY WAIVER

AltRider LLC, a Washington company, having its principal place of business in Seattle, WA ("AltRider") offers its motorcycle accessories (the "Product") with the terms, conditions and notices as follows:

##### Terms of Use

This Product is offered to you conditioned upon your acceptance without modification of the terms, conditions, and notices contained herein. Installation and/or use of this product implies acceptance of all such terms, conditions, and notices. If you do not agree to these terms, do not buy the Product. If you have already bought the Product and do not agree to these terms, return this Product promptly including the packaging and all written materials, to AltRider.

##### Limitation of Liability and Warranty Disclaimer

You may return your merchandise for a full refund or exchange, less any original or return shipping fees under these conditions:

1. Only if the merchandise is in 100% factory condition. Original manufacturer's packaging and same condition as sold – original boxes, packaging material, instructions, documentation, parts, and attached tags.
2. Only unused, unscratched, uninstalled, undamaged merchandise will be accepted. Do not install equipment until you are sure you want to keep it. Package items carefully in protective materials before returning them. Never ship an item in its original manufacturers packaging – it will arrive damaged. Please use a postal box or other adequate packaging to ensure your return or exchange is not damaged on the way back to AltRider.com.

To read more about our exchanges and returns policy, on the web, navigate to <http://www.altrider.com/info/exchangesAndReturns>

Excepting the warranties stated in the preceding paragraph, AltRider hereby disclaims all other warranties and conditions with regard to the Product including all implied warranties and conditions of merchantability and fitness for a particular purpose. There are no warranties which extend beyond the description on the face hereof. AltRider does not warrant against damages or defects arising out of use or installation of the Product. Installation instructions are provided for your convenience. AltRider is not responsible for any damages arising out of the installation, improper or otherwise, of the Product. No warranty of any kind, expressed or implied, is made regarding the safety of this Product.

To the extent allowed by law, AltRider shall not be held liable for any direct, indirect, punitive, incidental, special or consequential damages arising out of, or connected with, the use or misuse of this Product. Buyer assumes all risks and liability arising from use of this Product.

##### Entire Agreement

This document states the entire obligation of AltRider with respect to the Product. If any part of this agreement is determined to be void, invalid, unenforceable or illegal, including, but not limited to the warranty disclaimers and liability limitations set forth above, then the remainder of the agreement shall remain in full force and effect.

##### Applicable Law

This agreement is governed by the laws of Washington, USA. You hereby consent to the exclusive jurisdiction and venue of the courts of Washington, USA, in all disputes arising out of or relating to the use of this product.

